

DECIBEL - Main Result

Calculation: 74x N163 5.7 MW 148m - LF outdoor

Noise calculation model:

Finland Low frequency

Wind speed (in 10 m height):

8,0 m/s

Spectral distribution:

From 20,0 Hz to 200,0 Hz

Ground attenuation:

General, Ground factor: 0,4

Meteorological coefficient, CO:

0,0 dB

Type of demand in calculation:

1: WTG noise is compared to demand (DK, DE, SE, NL etc.)

Noise values in calculation:

All noise values are mean values (Lwa) (Normal)

Pure tones:

Pure tone penalty is subtracted from demand

Model: 5,0 dB(A)

Height above ground level, when no value in NSA object:

4,0 m; Don't allow override of model height with height from NSA object

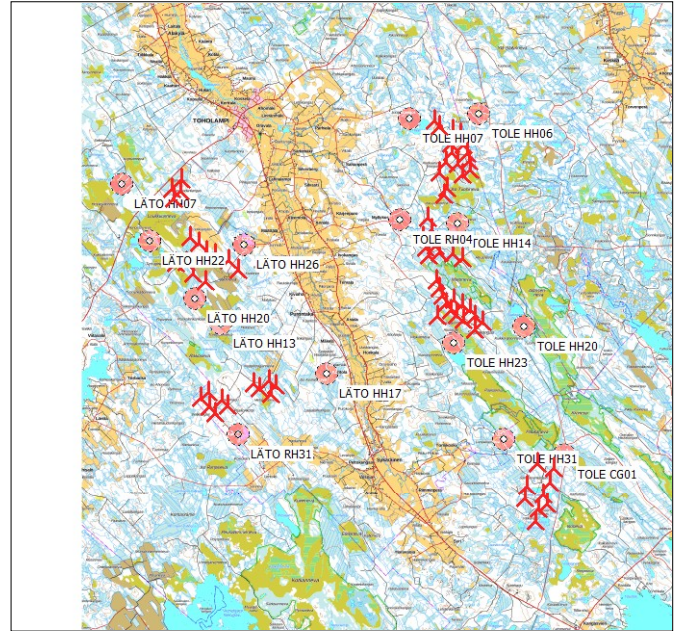
Uncertainty margin:

0,0 dB; Uncertainty margin in NSA has priority

Deviation from "official" noise demands. Negative is more

restrictive, positive is less restrictive.:

0,0 dB(A)



Scale 1:400.000

New WTG

Noise sensitive area

WTGs

	East North Z			Row data/Description	WTG type			Power, rated [kW]	Rotor diameter [m]	Hub height [m]	Noise data		Wind speed [m/s]	Lwa,ref [dB(A)]
	East	North	Z		Valid	Manufact.	Type-generator				Creator	Name		
A 01	361.257,0	7.071.221,0	129,4	NORDEX N163/5.X 5700 163,0 ...Yes	NORDEX	N163/5.X-5.700	5.700	163,0	148,0	USER	Third octave SPL without serrated trailing edge – Mode 0	8,0	98,2	
A 02	360.733,0	7.070.696,0	129,6	NORDEX N163/5.X 5700 163,0 ...Yes	NORDEX	N163/5.X-5.700	5.700	163,0	148,0	USER	Third octave SPL without serrated trailing edge – Mode 0	8,0	98,2	
A 03	361.183,6	7.070.586,3	131,5	NORDEX N163/5.X 5700 163,0 ...Yes	NORDEX	N163/5.X-5.700	5.700	163,0	148,0	USER	Third octave SPL without serrated trailing edge – Mode 0	8,0	98,2	
A 04	360.830,8	7.070.196,7	123,3	NORDEX N163/5.X 5700 163,0 ...Yes	NORDEX	N163/5.X-5.700	5.700	163,0	148,0	USER	Third octave SPL without serrated trailing edge – Mode 0	8,0	98,2	
C 05	361.705,5	7.068.156,1	119,3	NORDEX N163/5.X 5700 163,0 ...Yes	NORDEX	N163/5.X-5.700	5.700	163,0	148,0	USER	Third octave SPL without serrated trailing edge – Mode 0	8,0	98,2	
C 06	362.133,4	7.067.891,5	116,9	NORDEX N163/5.X 5700 163,0 ...Yes	NORDEX	N163/5.X-5.700	5.700	163,0	148,0	USER	Third octave SPL without serrated trailing edge – Mode 0	8,0	98,2	
C 08	362.561,5	7.067.426,6	117,9	NORDEX N163/5.X 5700 163,0 ...Yes	NORDEX	N163/5.X-5.700	5.700	163,0	148,0	USER	Third octave SPL without serrated trailing edge – Mode 0	8,0	98,2	
C 09	363.024,6	7.067.261,1	116,5	NORDEX N163/5.X 5700 163,0 ...Yes	NORDEX	N163/5.X-5.700	5.700	163,0	148,0	USER	Third octave SPL without serrated trailing edge – Mode 0	8,0	98,2	
C 10	363.702,9	7.066.962,8	120,3	NORDEX N163/5.X 5700 163,0 ...Yes	NORDEX	N163/5.X-5.700	5.700	163,0	148,0	USER	Third octave SPL without serrated trailing edge – Mode 0	8,0	98,2	
C 11	360.958,3	7.066.803,7	124,5	NORDEX N163/5.X 5700 163,0 ...Yes	NORDEX	N163/5.X-5.700	5.700	163,0	148,0	USER	Third octave SPL without serrated trailing edge – Mode 0	8,0	98,2	
C 12	361.467,2	7.066.839,0	124,2	NORDEX N163/5.X 5700 163,0 ...Yes	NORDEX	N163/5.X-5.700	5.700	163,0	148,0	USER	Third octave SPL without serrated trailing edge – Mode 0	8,0	98,2	
C 13	364.221,1	7.066.470,4	121,8	NORDEX N163/5.X 5700 163,0 ...Yes	NORDEX	N163/5.X-5.700	5.700	163,0	148,0	USER	Third octave SPL without serrated trailing edge – Mode 0	8,0	98,2	
C 14	361.839,0	7.066.251,0	124,7	NORDEX N163/5.X 5700 163,0 ...Yes	NORDEX	N163/5.X-5.700	5.700	163,0	148,0	USER	Third octave SPL without serrated trailing edge – Mode 0	8,0	98,2	
C 15	362.519,5	7.065.836,2	127,6	NORDEX N163/5.X 5700 163,0 ...Yes	NORDEX	N163/5.X-5.700	5.700	163,0	148,0	USER	Third octave SPL without serrated trailing edge – Mode 0	8,0	98,2	
E 22	365.826,0	7.060.637,3	141,3	NORDEX N163/5.X 5700 163,0 ...Yes	NORDEX	N163/5.X-5.700	5.700	163,0	148,0	USER	Third octave SPL without serrated trailing edge – Mode 0	8,0	98,2	
E 23	366.207,0	7.060.382,0	143,1	NORDEX N163/5.X 5700 163,0 ...Yes	NORDEX	N163/5.X-5.700	5.700	163,0	148,0	USER	Third octave SPL without serrated trailing edge – Mode 0	8,0	98,2	
E 24	365.023,0	7.060.495,2	142,3	NORDEX N163/5.X 5700 163,0 ...Yes	NORDEX	N163/5.X-5.700	5.700	163,0	148,0	USER	Third octave SPL without serrated trailing edge – Mode 0	8,0	98,2	
E 25	365.356,7	7.060.210,0	142,8	NORDEX N163/5.X 5700 163,0 ...Yes	NORDEX	N163/5.X-5.700	5.700	163,0	148,0	USER	Third octave SPL without serrated trailing edge – Mode 0	8,0	98,2	
E 26	365.960,6	7.059.917,9	143,9	NORDEX N163/5.X 5700 163,0 ...Yes	NORDEX	N163/5.X-5.700	5.700	163,0	148,0	USER	Third octave SPL without serrated trailing edge – Mode 0	8,0	98,2	
F 27	362.668,4	7.060.038,7	137,3	NORDEX N163/5.X 5700 163,0 ...Yes	NORDEX	N163/5.X-5.700	5.700	163,0	148,0	USER	Third octave SPL without serrated trailing edge – Mode 0	8,0	98,2	
F 28	362.271,9	7.059.717,9	137,3	NORDEX N163/5.X 5700 163,0 ...Yes	NORDEX	N163/5.X-5.700	5.700	163,0	148,0	USER	Third octave SPL without serrated trailing edge – Mode 0	8,0	98,2	
F 29	363.368,9	7.059.610,4	152,7	NORDEX N163/5.X 5700 163,0 ...Yes	NORDEX	N163/5.X-5.700	5.700	163,0	148,0	USER	Third octave SPL without serrated trailing edge – Mode 0	8,0	98,2	
F 30	362.715,3	7.059.234,8	153,9	NORDEX N163/5.X 5700 163,0 ...Yes	NORDEX	N163/5.X-5.700	5.700	163,0	148,0	USER	Third octave SPL without serrated trailing edge – Mode 0	8,0	98,2	
F 31	363.673,7	7.059.290,5	152,6	NORDEX N163/5.X 5700 163,0 ...Yes	NORDEX	N163/5.X-5.700	5.700	163,0	148,0	USER	Third octave SPL without serrated trailing edge – Mode 0	8,0	98,2	
F 32	362.992,7	7.058.912,4	154,1	NORDEX N163/5.X 5700 163,0 ...Yes	NORDEX	N163/5.X-5.700	5.700	163,0	148,0	USER	Third octave SPL without serrated trailing edge – Mode 0	8,0	98,2	
L 49	379.972,5	7.056.276,0	145,0	NORDEX N163/5.X 5700 163,0 ...Yes	NORDEX	N163/5.X-5.700	5.700	163,0	148,0	USER	Third octave SPL without serrated trailing edge – Mode 0	8,0	98,2	
L 50	380.811,2	7.056.009,3	142,7	NORDEX N163/5.X 5700 163,0 ...Yes	NORDEX	N163/5.X-5.700	5.700	163,0	148,0	USER	Third octave SPL without serrated trailing edge – Mode 0	8,0	98,2	
L 51	380.658,1	7.055.233,9	145,9	NORDEX N163/5.X 5700 163,0 ...Yes	NORDEX	N163/5.X-5.700	5.700	163,0	148,0	USER	Third octave SPL without serrated trailing edge – Mode 0	8,0	98,2	
L 52	379.436,9	7.055.066,7	145,6	NORDEX N163/5.X 5700 163,0 ...Yes	NORDEX	N163/5.X-5.700	5.700	163,0	148,0	USER	Third octave SPL without serrated trailing edge – Mode 0	8,0	98,2	
L 53	380.256,6	7.054.576,5	145,4	NORDEX N163/5.X 5700 163,0 ...Yes	NORDEX	N163/5.X-5.700	5.700	163,0	148,0	USER	Third octave SPL without serrated trailing edge – Mode 0	8,0	98,2	
L 54	379.314,9	7.054.418,7	143,8	NORDEX N163/5.X 5700 163,0 ...Yes	NORDEX	N163/5.X-5.700	5.700	163,0	148,0	USER	Third octave SPL without serrated trailing edge – Mode 0	8,0	98,2	
L 55	380.471,7	7.054.117,4	147,7	NORDEX N163/5.X 5700 163,0 ...Yes	NORDEX	N163/5.X-5.700	5.700	163,0	148,0	USER	Third octave SPL without serrated trailing edge – Mode 0	8,0	98,2	
L 56	380.022,0	7.053.860,5	146,4	NORDEX N163/5.X 5700 163,0 ...Yes	NORDEX	N163/5.X-5.700	5.700	163,0	148,0	USER	Third octave SPL without serrated trailing edge – Mode 0	8,0	98,2	
L 57	379.887,2	7.053.173,8	146,2	NORDEX N163/5.X 5700 163,0 ...Yes	NORDEX	N163/5.X-5.700	5.700	163,0	148,0	USER	Third octave SPL without serrated trailing edge – Mode 0	8,0	98,2	
T 01	374.534,3	7.074.294,4	114,9	NORDEX N163/5.X 5700 163,0 ...Yes	NORDEX	N163/5.X-5.700	5.700	163,0	148,0	USER	Third octave SPL without serrated trailing edge – Mode 0	8,0	98,2	
T 02	374.803,1	7.073.990,0	119,0	NORDEX N163/5.X 5700 163,0 ...Yes	NORDEX	N163/5.X-5.700	5.700	163,0	148,0	USER	Third octave SPL without serrated trailing edge – Mode 0	8,0	98,2	
T 03	375.503,9	7.073.773,8	118,5	NORDEX N163/5.X 5700 163,0 ...Yes	NORDEX	N163/5.X-5.700	5.700	163,0	148,0	USER	Third octave SPL without serrated trailing edge – Mode 0	8,0	98,2	
T 04	375.948,6	7.073.585,8	116,9	NORDEX N163/5.X 5700 163,0 ...Yes	NORDEX	N163/5.X-5.700	5.700	163,0	148,0	USER	Third octave SPL without serrated trailing edge – Mode 0	8,0	98,2	
T 05	374.909,7	7.073.480,0	117,9	NORDEX N163/5.X 5700 163,0 ...Yes	NORDEX	N163/5.X-5.700	5.700	163,0	148,0	USER	Third octave SPL without serrated trailing edge – Mode 0	8,0	98,2	
T 06	375.410,5	7.073.106,5	120,1	NORDEX N163/5.X 5700 163,0 ...Yes	NORDEX	N163/5.X-5.700	5.700	163,0	148,0	USER	Third octave SPL without serrated trailing edge – Mode 0	8,0	98,2	
T 07	370.067,8	7.073.055,8	120,8	NORDEX N163/5.X 5700 163,0 ...Yes	NORDEX	N163/5.X-5.700	5.700	163,0	148,0	USER	Third octave SPL without serrated trailing edge – Mode 0	8,0	98,2	
T 08	375.489,2	7.072.649,0	127,5	NORDEX N163/5.X 5700 163,0 ...Yes	NORDEX	N163/5.X-5.700	5.700	163,0	148,0	USER	Third octave SPL without serrated trailing edge – Mode 0	8,0	98,2	
T 09	376.264,7	7.072.570,1	125,3	NORDEX N163/5.X 5700 163,0 ...Yes	NORDEX	N163/5.X-5.700	5.700	163,0	148,0	USER	Third octave SPL without serrated trailing edge – Mode 0	8,0	98,2	
T 10	376.405,0	7.072.151,8	128,7	NORDEX N163/5.X 5700 163,0 ...Yes	NORDEX	N163/5.X-5.700	5.700	163,0	148,0	USER	Third octave SPL without serrated trailing edge – Mode 0	8,0	98,2	
T 11	375.762,9	7.072.003,7	127,5	NORDEX N163/5.X 5700 163,0 ...Yes	NORDEX	N163/5.X-5.700	5.700	163,0	148,0	USER	Third octave SPL without serrated trailing edge – Mode 0	8,0	98,2	
T 12	375.151,4	7.072.115,0	124,3	NORDEX N163/5.X 5700 163,0 ...Yes	NORDEX	N163/5.X-5.700	5.700	163,0	148,0	USER	Third octave SPL without serrated trailing edge – Mode 0	8,0	98,2	
T 13	376.436,2	7.071.722,6	127,7	NORDEX N163/5.X 5700 163,0 ...Yes	NORDEX	N163/5.X-5.700	5.700	163,0	148,0	USER	Third octave SPL without serrated trailing edge – Mode 0	8,0	98,2	
T 14	376.011,8	7.071.469,2	129,3	NORDEX N163/5.X 5700 163,0 ...Yes	NORDEX	N163/5.X-5.700	5.700	163,0	148,0	USER	Third octave SPL without serrated trailing edge – Mode 0	8,0	98,2	
T 15	374.834,6	7.071.580,6	128,6	NORDEX N163/5.X 5700 163,0 ...Yes	NORDEX	N163/5.X-5.700	5.700	163,0	148,0	USER	Third octave SPL without serrated trailing edge – Mode 0	8,0	98,2	
T 17	375.209,6	7.070.728,0	128,4	NORDEX N163/5.X 5700 163,0 ...Yes	NORDEX	N163/5.X-5.700	5.700	163,0	148,0	USER	Third octave SPL without serrated trailing edge – Mode 0	8,0	98,2	
T 18	375.041,4	7.070.399,9	126,3	NORDEX N163/5.X 5700 163,0 ...Yes	NORDEX	N163/5.X-5.700	5.700	163,0	148,0	USER	Third octave SPL without serrated trailing edge – Mode 0	8,0	98,2	

To be continued on next page...

DECIBEL - Main Result

Calculation: 74x N163 5.7 MW 148m - LF outdoor

...continued from previous page

	East	North	Z	Row data/Description	WTG type			Power, rated [kW]	Rotor diameter [m]	Hub height [m]	Noise data		Wind speed [m/s]	LwA,ref [dB(A)]
					Valid	Manufact.	Type-generator				Creator	Name		
T 20	374.180,2	7.069.158,6	122,6	NORDEX N163/5.X 5700 163.0 ...Yes	NORDEX	N163/5.X-5.700	5.700	163,0	148,0	USER	Third octave SPL without serrated trailing edge – Mode 0	8,0	98,2	
T 21	374.425,1	7.068.580,1	127,8	NORDEX N163/5.X 5700 163.0 ...Yes	NORDEX	N163/5.X-5.700	5.700	163,0	148,0	USER	Third octave SPL without serrated trailing edge – Mode 0	8,0	98,2	
T 22	373.961,5	7.068.149,8	122,5	NORDEX N163/5.X 5700 163.0 ...Yes	NORDEX	N163/5.X-5.700	5.700	163,0	148,0	USER	Third octave SPL without serrated trailing edge – Mode 0	8,0	98,2	
T 23	374.607,4	7.067.703,0	124,3	NORDEX N163/5.X 5700 163.0 ...Yes	NORDEX	N163/5.X-5.700	5.700	163,0	148,0	USER	Third octave SPL without serrated trailing edge – Mode 0	8,0	98,2	
T 24	374.819,8	7.067.371,9	125,2	NORDEX N163/5.X 5700 163.0 ...Yes	NORDEX	N163/5.X-5.700	5.700	163,0	148,0	USER	Third octave SPL without serrated trailing edge – Mode 0	8,0	98,2	
T 25	374.120,6	7.067.637,4	131,3	NORDEX N163/5.X 5700 163.0 ...Yes	NORDEX	N163/5.X-5.700	5.700	163,0	148,0	USER	Third octave SPL without serrated trailing edge – Mode 0	8,0	98,2	
T 26	375.534,8	7.067.312,5	126,7	NORDEX N163/5.X 5700 163.0 ...Yes	NORDEX	N163/5.X-5.700	5.700	163,0	148,0	USER	Third octave SPL without serrated trailing edge – Mode 0	8,0	98,2	
T 27	374.234,6	7.067.210,2	127,4	NORDEX N163/5.X 5700 163.0 ...Yes	NORDEX	N163/5.X-5.700	5.700	163,0	148,0	USER	Third octave SPL without serrated trailing edge – Mode 0	8,0	98,2	
T 29	376.001,6	7.067.075,7	128,4	NORDEX N163/5.X 5700 163.0 ...Yes	NORDEX	N163/5.X-5.700	5.700	163,0	148,0	USER	Third octave SPL without serrated trailing edge – Mode 0	8,0	98,2	
T 30	374.677,9	7.065.898,6	133,9	NORDEX N163/5.X 5700 163.0 ...Yes	NORDEX	N163/5.X-5.700	5.700	163,0	148,0	USER	Third octave SPL without serrated trailing edge – Mode 0	8,0	98,2	
T 31	374.829,6	7.065.499,2	136,3	NORDEX N163/5.X 5700 163.0 ...Yes	NORDEX	N163/5.X-5.700	5.700	163,0	148,0	USER	Third octave SPL without serrated trailing edge – Mode 0	8,0	98,2	
T 32	374.968,4	7.065.086,4	140,9	NORDEX N163/5.X 5700 163.0 ...Yes	NORDEX	N163/5.X-5.700	5.700	163,0	148,0	USER	Third octave SPL without serrated trailing edge – Mode 0	8,0	98,2	
T 33	375.573,9	7.064.882,5	135,8	NORDEX N163/5.X 5700 163.0 ...Yes	NORDEX	N163/5.X-5.700	5.700	163,0	148,0	USER	Third octave SPL without serrated trailing edge – Mode 0	8,0	98,2	
T 34	375.182,5	7.064.686,5	140,4	NORDEX N163/5.X 5700 163.0 ...Yes	NORDEX	N163/5.X-5.700	5.700	163,0	148,0	USER	Third octave SPL without serrated trailing edge – Mode 0	8,0	98,2	
T 35	376.001,0	7.064.643,4	133,8	NORDEX N163/5.X 5700 163.0 ...Yes	NORDEX	N163/5.X-5.700	5.700	163,0	148,0	USER	Third octave SPL without serrated trailing edge – Mode 0	8,0	98,2	
T 36	375.429,5	7.064.337,9	140,0	NORDEX N163/5.X 5700 163.0 ...Yes	NORDEX	N163/5.X-5.700	5.700	163,0	148,0	USER	Third octave SPL without serrated trailing edge – Mode 0	8,0	98,2	
T 37	376.438,3	7.064.393,3	133,1	NORDEX N163/5.X 5700 163.0 ...Yes	NORDEX	N163/5.X-5.700	5.700	163,0	148,0	USER	Third octave SPL without serrated trailing edge – Mode 0	8,0	98,2	
T 38	375.743,3	7.064.069,7	139,8	NORDEX N163/5.X 5700 163.0 ...Yes	NORDEX	N163/5.X-5.700	5.700	163,0	148,0	USER	Third octave SPL without serrated trailing edge – Mode 0	8,0	98,2	
T 39	376.685,7	7.064.000,3	135,2	NORDEX N163/5.X 5700 163.0 ...Yes	NORDEX	N163/5.X-5.700	5.700	163,0	148,0	USER	Third octave SPL without serrated trailing edge – Mode 0	8,0	98,2	
T 40	374.686,6	7.064.039,0	139,3	NORDEX N163/5.X 5700 163.0 ...Yes	NORDEX	N163/5.X-5.700	5.700	163,0	148,0	USER	Third octave SPL without serrated trailing edge – Mode 0	8,0	98,2	
T 41	377.078,4	7.063.705,2	133,8	NORDEX N163/5.X 5700 163.0 ...Yes	NORDEX	N163/5.X-5.700	5.700	163,0	148,0	USER	Third octave SPL without serrated trailing edge – Mode 0	8,0	98,2	
T 47	376.066,6	7.063.791,7	140,5	NORDEX N163/5.X 5700 163.0 ...Yes	NORDEX	N163/5.X-5.700	5.700	163,0	148,0	USER	Third octave SPL without serrated trailing edge – Mode 0	8,0	98,2	
T 48	376.682,1	7.063.296,0	142,4	NORDEX N163/5.X 5700 163.0 ...Yes	NORDEX	N163/5.X-5.700	5.700	163,0	148,0	USER	Third octave SPL without serrated trailing edge – Mode 0	8,0	98,2	

Calculation Results

Sound level

No.	Name	East	North	Z	Imission height [m]	Most critical demand		WTG noise [dB]
						Frequency [Hz]	Predicted sound level [dB]	
LÄTO HH07	Noise sensitive point: Finnish normal frequency - User defined (1186)	358.077,4	7.070.959,6	124,2	4,0	100,0	38,0	40,9
LÄTO HH13	Noise sensitive point: Finnish normal frequency - User defined (1189)	363.332,0	7.063.620,6	129,4	4,0	100,0	38,0	43,9
LÄTO HH17	Noise sensitive point: Finnish normal frequency - User defined (1172)	368.879,8	7.060.959,9	130,7	4,0	100,0	38,0	42,1
LÄTO HH20	Noise sensitive point: Finnish normal frequency - User defined (1187)	361.967,9	7.064.913,3	128,4	4,0	100,0	38,0	47,0
LÄTO HH22	Noise sensitive point: Finnish normal frequency - User defined (1185)	359.591,9	7.067.991,5	121,0	4,0	100,0	38,0	44,8
LÄTO HH26	Noise sensitive point: Finnish normal frequency - User defined (1183)	364.547,4	7.067.744,7	111,2	4,0	100,0	38,0	47,0
LÄTO RH31	Noise sensitive point: Finnish normal frequency - User defined (1171)	364.222,6	7.057.790,3	141,0	4,0	100,0	38,0	45,5
TOLE CG01	Noise sensitive point: Finnish normal frequency - User defined (1174)	381.416,3	7.056.706,2	137,9	4,0	100,0	38,0	46,6
TOLE HH06	Noise sensitive point: Finnish normal frequency - User defined (1179)	376.880,2	7.074.646,2	133,5	4,0	100,0	38,0	47,2
TOLE HH07	Noise sensitive point: Finnish normal frequency - User defined (1180)	373.260,7	7.074.406,7	120,1	4,0	100,0	38,0	46,6
TOLE HH14	Noise sensitive point: Finnish normal frequency - User defined (1176)	375.778,6	7.068.878,5	126,4	4,0	100,0	38,0	49,3
TOLE HH20	Noise sensitive point: Finnish normal frequency - User defined (1182)	379.286,3	7.063.476,5	129,8	4,0	100,0	38,0	43,9
TOLE HH23	Noise sensitive point: Finnish normal frequency - User defined (1181)	375.559,6	7.062.616,5	136,5	4,0	100,0	38,0	48,8
TOLE HH31	Noise sensitive point: Finnish normal frequency - User defined (1173)	378.182,5	7.057.540,0	139,2	4,0	100,0	38,0	42,5
TOLE RH04	Noise sensitive point: Finnish normal frequency - User defined (1175)	372.752,9	7.069.059,6	115,3	4,0	100,0	38,0	47,5

*)Spectral distribution, please see details in report "Detailed results"

Distances (m)

WTG	LÄTO HH07	LÄTO HH13	LÄTO HH17	LÄTO HH20	LÄTO HH22	LÄTO HH26	LÄTO RH31	TOLE CG01	TOLE HH06	TOLE HH07	TOLE HH14	TOLE HH20	TOLE HH23	TOLE HH31	TOLE RH04
A 01	3190	7879	12783	6348	3633	4787	13754	24841	15994	12419	14709	19622	16691	21763	11697
A 02	2669	7538	12695	5913	2935	4823	13369	24970	16623	13066	15155	19908	16885	21853	12131
A 03	3129	7290	12325	5727	3044	4403	13152	24536	16213	12667	14695	19449	16437	21428	11670
A 04	2857	7036	12252	5404	2529	4453	12862	24612	16655	13124	15006	19641	16565	21477	11976
C 05	4585	4818	10161	3253	2120	2872	10667	22795	16504	13137	14092	18193	14921	19601	11084
C 06	5086	4436	9673	2983	2543	2418	10315	22292	16220	12894	13681	17712	14425	19098	10684
C 08	5709	3883	9041	2582	3023	2011	9778	21689	16036	12775	13297	17185	13860	18487	10321
C 09	6177	3653	8602	2575	3510	1598	9546	21205	15701	12483	12856	16696	13368	18007	9893
C 10	6901	3363	7927	2685	4238	1151	9187	20469	15254	12115	12227	15969	12628	17276	9290
C 11	5057	3971	9844	2143	1810	3710	9586	22814	17749	14462	14965	18628	15190	19557	12008
C 12	5336	3720	9461	1990	2201	3211	9459	22375	17278	14013	14456	18134	14711	19128	11502
C 13	7609	2985	7216	2739	4873	1315	8680	19774	15070	12029	11806	15360	11976	16573	8916
C 14	6027	3025	8807	1344	2842	3093	8790	21780	17225	14035	14185	17667	14194	18520	11270
C 15	6781	2360	8014	1075	3635	2785	8224	20987	16848	13741	13604	16932	13432	17724	10729
E 22	12907	3888	3071	5759	9641	7221	3267	16078	17845	15648	12922	13756	9933	12739	10905
E 23	13341	4331	2735	6205	10083	7547	3264	15647	17815	15699	12799	13440	9616	12308	10870
E 24	12560	3554	3885	5372	9257	7265	2821	16825	18462	16168	13637	14572	10748	13487	11537
E 25	12982	3966	3602	5797	9684	7578	2672	16437	18471	16249	13556	14307	10483	13101	11533
E 26	13567	4541	3100	6395	10283	7953	2747	15786	18335	16224	13292	13793	9971	12451	11389
F 27	11847	3643	6279	4925	8527	7932	2733	19042	20380	17850	15812	16970	13146	15714	13531
F 28	11999	4044	6724	5204	8697	8343	2742	19380	20887	18344	16320	17425	13600	16059	14040
F 29	12522	4010	5674	5485	9193	8219	2010	18280	20215	17798	15489	16380	12556	14958	13317

To be continued on next page...

DECIBEL - Main Result

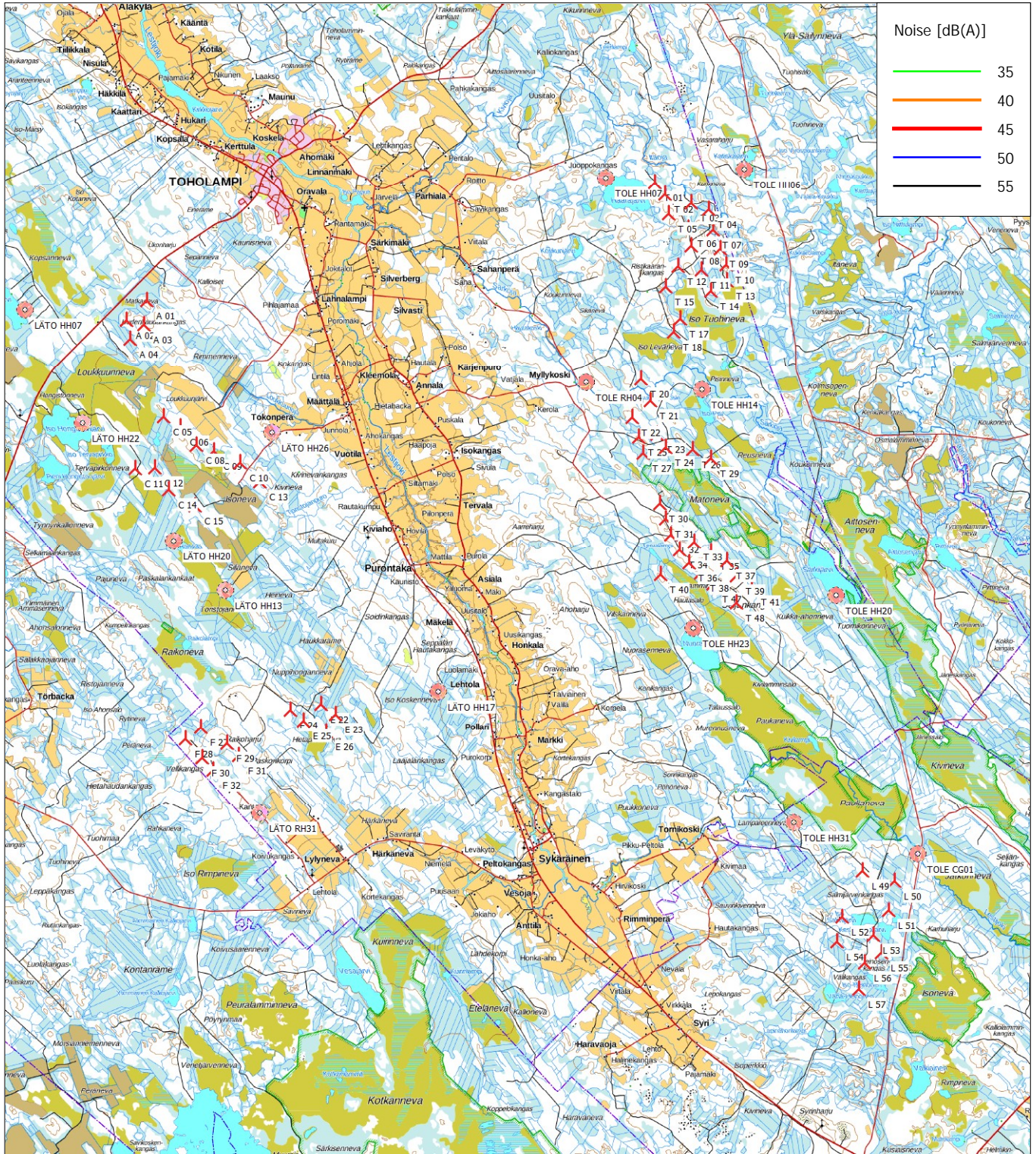
Calculation: 74x N163 5.7 MW 148m - LF outdoor

...continued from previous page

WTG	LÄTO HH07	LÄTO HH13	LÄTO HH17	LÄTO HH20	LÄTO HH22	LÄTO HH26	LÄTO RH31	TOLE CG01	TOLE HH06	TOLE HH07	TOLE HH14	TOLE HH20	TOLE HH23	TOLE HH31	TOLE RH04
F 30	12609	4429	6401	5728	9297	8705	2088	18871	20932	18477	16237	17105	13282	15560	14046
F 31	12942	4344	5467	5876	9611	8499	1597	17930	20254	17900	15442	16164	12342	14614	13337
F 32	13011	4720	6233	6088	9695	8968	1665	18555	20986	18588	16211	16921	13101	15252	14079
L 49	26363	18189	12041	19969	23508	19221	15823	1507	18629	19333	13282	7233	7725	2191	14681
L 50	27209	19064	12918	20841	24369	20056	16684	923	19047	19887	13818	7621	8440	3042	15338
L 51	27517	19249	13096	21048	24628	20398	16633	1656	19777	20550	14491	8356	8972	3383	15926
L 52	26623	18236	12091	20053	23683	19556	15456	2570	19746	20302	14288	8411	8487	2773	15507
L 53	27574	19189	13045	21008	24637	20498	16353	2425	20352	21028	14987	8953	9311	3617	16312
L 54	26919	18443	12316	20275	23942	19891	15464	3106	20374	20885	14886	9058	9017	3320	16044
L 55	28021	19598	13461	21423	25069	20959	16659	2756	20841	21533	15489	9434	9816	4118	16818
L 56	27820	19334	13212	21169	24841	20790	16281	3169	21022	21630	15606	9644	9828	4114	16848
L 57	28142	19576	13483	21422	25129	21157	16331	3849	21682	22243	16233	10320	10387	4687	17414
T 01	16791	15473	14484	15682	16217	11943	19461	18887	2372	1279	5557	11816	11723	17147	5530
T 02	16998	15463	14313	15743	16625	12114	19349	18506	2178	1598	5204	11429	11399	16794	5340
T 03	17652	15851	14425	16178	16930	12506	19564	18063	1630	2331	4903	10970	11157	16453	5458
T 04	18063	16077	14470	16452	17287	12810	19672	17743	1412	2810	4710	10646	10976	16201	5541
T 05	17020	15207	13896	15520	16271	11844	18984	17992	2290	1892	4683	10919	10883	16272	4918
T 06	17466	15358	13791	15743	16625	12114	18967	17465	2129	2512	4244	10381	10491	15811	4841
T 07	18112	15850	14070	16282	17237	12686	19322	17202	1786	3115	4187	10106	10452	15659	5192
T 08	17494	15143	13428	15578	16565	11991	18647	17009	2434	2838	3782	9927	10033	15347	4513
T 09	18258	15727	13760	16218	17290	12672	19065	16679	2165	3521	3723	9582	9979	15152	4965
T 10	18366	15610	13487	16150	17320	12650	18836	16238	2539	3869	3333	9141	9573	14719	4785
T 11	17716	14993	13013	15510	16661	11997	18308	16309	2869	3469	3125	9226	9389	14665	4210
T 12	17113	14555	12797	15022	16097	11469	18018	16634	3065	2971	3297	9577	9507	14887	3884
T 13	18375	15407	13150	15991	17253	12537	18528	15821	2957	4158	2919	8725	9148	14290	4545
T 14	17942	14912	12701	15499	16784	12054	18058	15721	3294	4025	2601	8637	8864	14097	4053
T 15	16769	13988	12176	14492	15660	10979	17401	16265	3685	3235	2862	9246	8993	14434	3269
T 17	17134	13842	11640	14462	15856	11072	16973	15334	4260	4163	1935	8319	8119	13519	2970
T 18	16973	13530	11273	14178	15636	10825	16615	15105	4627	4385	1691	8121	7801	13238	2652
T 20	16203	12180	9763	12929	14635	9736	15113	14402	6116	5328	1623	7639	6686	12289	1431
T 21	16520	12151	9424	12986	14845	9913	14850	13779	6544	5942	1386	7048	6071	11662	1740
T 22	16131	11554	8804	12423	14370	9423	14219	13658	7122	6296	1958	7085	5759	11419	1513
T 23	16848	11992	8847	12944	15018	10060	14356	12934	7306	6838	1659	6305	5175	10773	2298
T 24	17122	12085	8741	13085	15240	10279	14287	12541	7560	7205	1786	5927	4813	10391	2668
T 25	16384	11512	8488	12454	14533	9574	13962	13142	7533	6824	2071	6633	5223	10884	1973
T 26	17834	12749	9200	13777	15957	10996	14786	12128	7456	7450	1585	5366	4696	10125	3285
T 27	16587	11478	8230	12480	14663	9702	13747	12724	7893	7262	2273	6282	4781	10445	2370
T 29	18340	13132	9387	14199	16435	11474	14999	11698	7621	7827	1817	4873	4481	9782	3807
T 30	17355	11572	7616	12748	15230	10297	13231	11398	9021	8625	3177	5206	3398	9064	3701
T 31	17620	11650	7484	12875	15440	10525	13112	10986	9374	9045	3510	4894	2974	8637	4122
T 32	17883	11728	7355	13002	15648	10755	12989	10574	9749	9475	3878	4608	2540	8202	4549
T 33	18522	12307	7759	13606	16282	11392	13385	10049	9851	9801	4001	3970	2266	7792	5040
T 34	18219	11898	7322	13217	15937	11066	12949	10126	10103	9908	4234	4278	2104	7751	5003
T 35	19004	12710	8017	14036	16747	11866	13627	9609	10041	10141	4241	3486	2074	7431	5482
T 36	18573	12119	7369	13474	16254	11403	12979	9700	10410	10300	4554	3952	1726	7334	5428
T 37	19500	13129	8302	14480	17226	12354	13886	9158	10262	10505	4533	2992	1982	7072	5946
T 38	18962	12419	7535	13801	16621	11784	13121	9295	10637	10631	4809	3592	1465	6970	5817
T 39	19867	13359	8377	14746	17554	12703	13925	8694	10648	10956	4962	2653	1784	6631	6408
T 40	17993	11362	6573	12749	15604	10795	12188	9953	10832	10465	4961	4634	1669	7380	5380
T 41	20339	13747	8646	15159	18004	13166	14151	8234	10943	11362	5334	2220	1869	6263	6883
T 47	19365	12736	7725	14143	17002	12179	13278	8878	10885	10980	5095	3235	1280	6600	6223
T 48	20121	13354	8145	14803	17723	12924	13622	8114	11352	11626	5655	2610	1312	5948	6975

DECIBEL - Map 8,0 m/s

Calculation: 74x N163 5.7 MW 148m - LF outdoor



Map: T100 , Print scale 1:150.000, Map center Finish TM ETRS-TM35FIN-ETRS89 East: 370.965,4 North: 7.063.913,5

New WTG

Noise sensitive area

Noise calculation model: Finland Low frequency. Wind speed: 8,0 m/s
Height above sea level from active line object